

# NEWS LETTER

for Palmetto Commerce Interchange



## Project Summary

The Palmetto Commerce Interchange project is located in a rapidly growing area of the I-26 corridor between US 78 (University Boulevard) and Ashley Phosphate Road.

Led by Charleston County, the project will reduce congestion at surrounding intersections, improve access options to existing and planned developments, increase traffic mobility in the I-26/Ashley Phosphate Road area, and provide a more efficient commute.

The completion of the National Environmental Policy Act (NEPA) process determined the County will construct an urban diamond interchange which is a type of highway interchange that uses less space than most freeway interchanges by constructing closely spaced ramp intersections. This alternative will best meet the goals of the project while having the least amount of impact to the surrounding environment.

Construction on this project began on August 1, 2023. The County anticipates the project to be substantially completed early in 2026.



## Project Overview

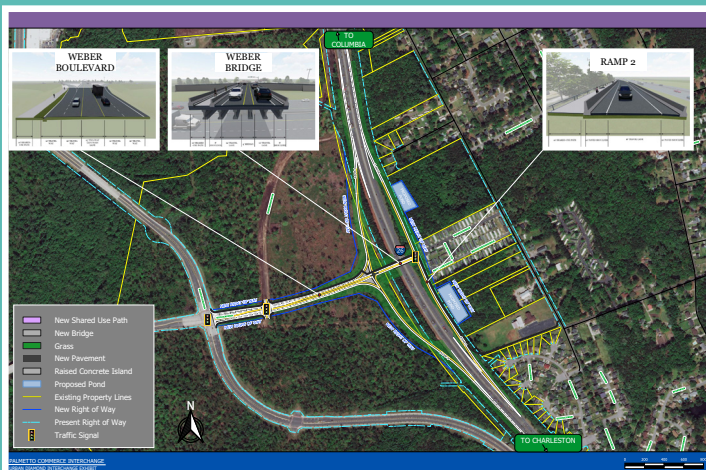
<b>Owner:</b> Charleston County	<b>Engineer of Record:</b> Davis and Floyd
<b>Contractor:</b> Banks Construction	<b>Construction Engineering and Inspection Services:</b> HDR
<b>Construction Contract Value:</b> \$52,363,321	<b>Notice to Proceed Date:</b> August 1, 2023
<b>Contract Completion Date:</b> 920 Calendar Days from NTP	<b>Small Business Enterprises (SBE) Requirement:</b> 12.2%



## Urban Diamond Interchange Design

According to the Federal Highway Administration, (FHWA) the key operational aspect of an Urban Diamond Interchange is signal coordination to ensure efficient progression of traffic and minimum storage of vehicles between the terminals (signal points). Other traffic flow parameters like saturation flow rate, clearance times, and turning speeds in an Urban Diamond Interchange are the same as a conventional at-grade intersection. Typically, an Urban Diamond Interchange requires a four-phase signal phasing with overlapping for both intersections.

The renderings and typical sections To the left show the proposed new interchange and details of the proposed ramps and bridges.



# Project Status

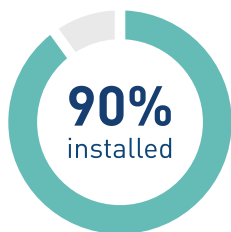
The project is anticipated to reach substantial completion by February 6, 2026. Here are some highlights of progress to date:



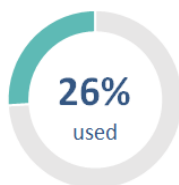
**Land Clearing Operations**



**Permanent Construction Signage**



**Erosion Control (Silt Fence)**



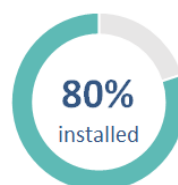
**Contract Time**



**Contract Amount**



**Overpass Foundation (Piles)**



**Utility Relocation (CWS & NCS)**

## Upcoming 3 months construction activities



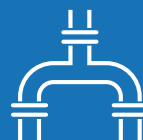
Concrete Culvert Installation



Utility Relocations



Earthwork Operations



Storm Drainage Installation



MSE Wall Construction